

Klipsch®

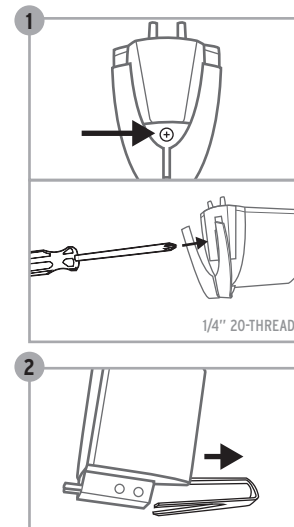
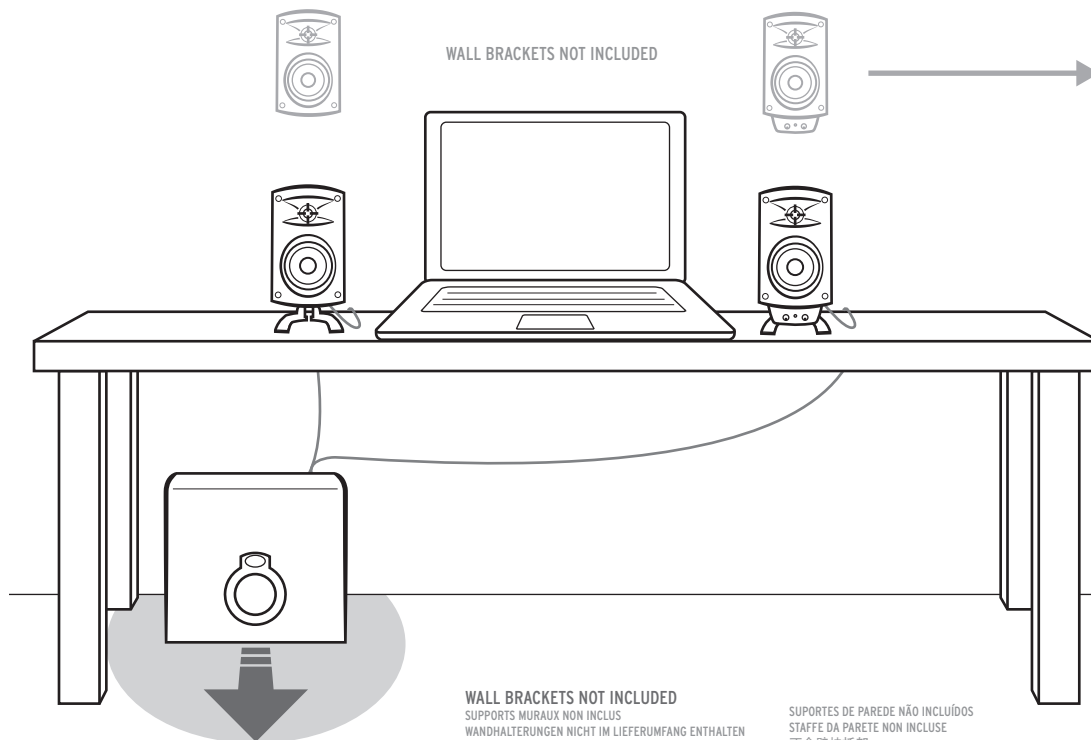
ProMedia 2.1

Owner's Manual



SPEAKER PLACEMENT

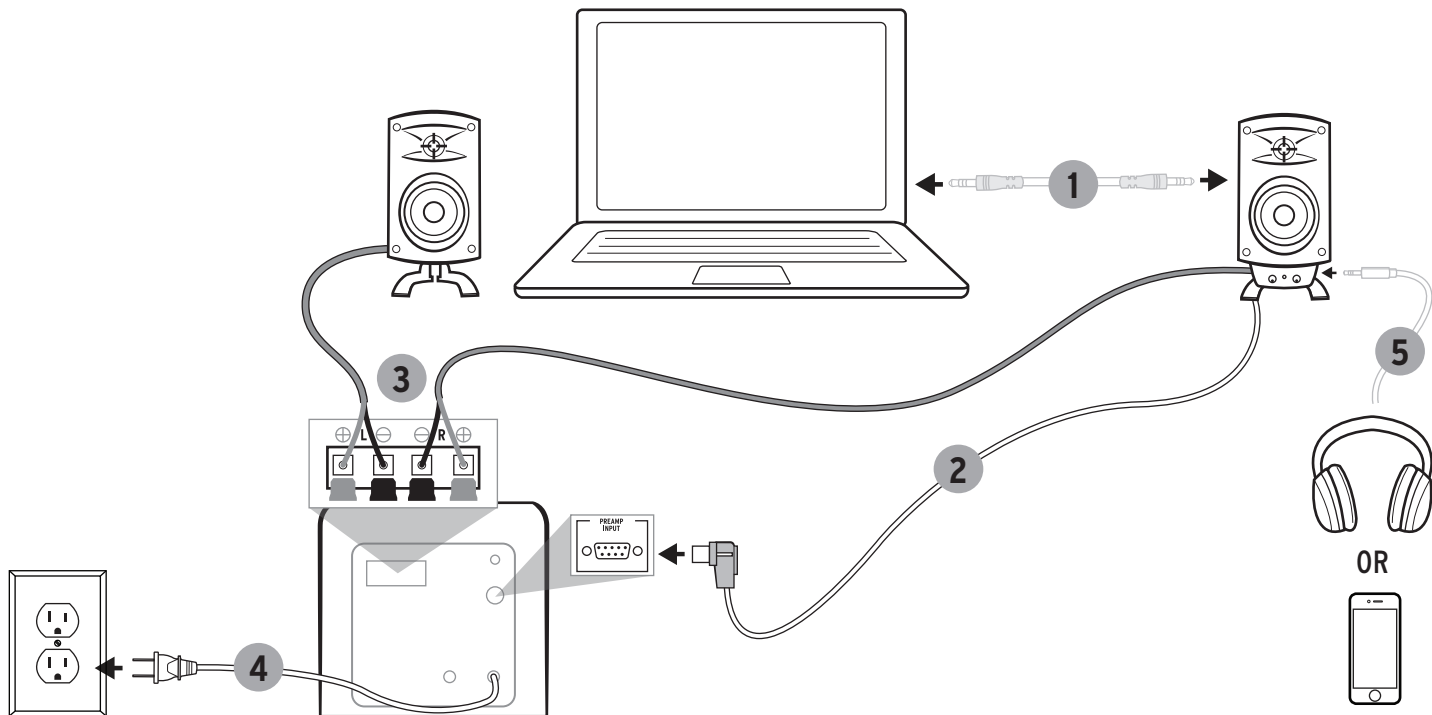
PLACEMENT DES ENCEINTES COLOCACIÓN DE LOS ALTAVOCES LAUTSPRECHERPLATZIERUNG POSICIONAMENTO DAS CAIXAS ACÚSTICAS COLLOCAZIONE DEGLI ALTOPARLANTI 扬声器放置



1/4" 20-THREAD
1/4" à filetage 20
1/4 de plg. con rosca 20
1/4 Zoll 20er-Gewinde
Parafuso de rosca de 1/4"
1/4 pollice filo 20
1/4英寸 (旋合圈数为 20)

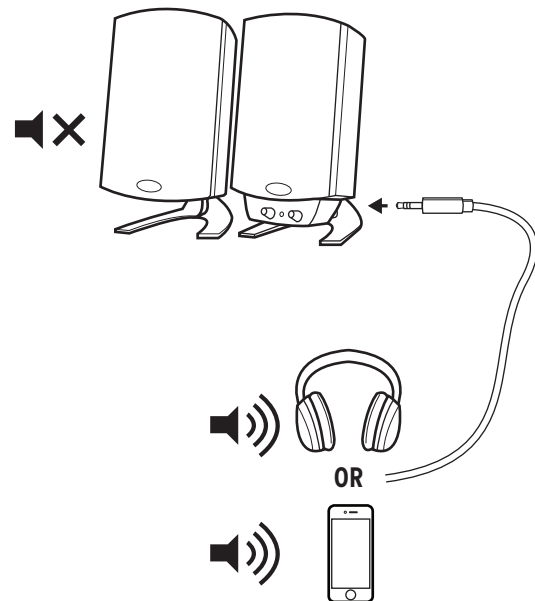
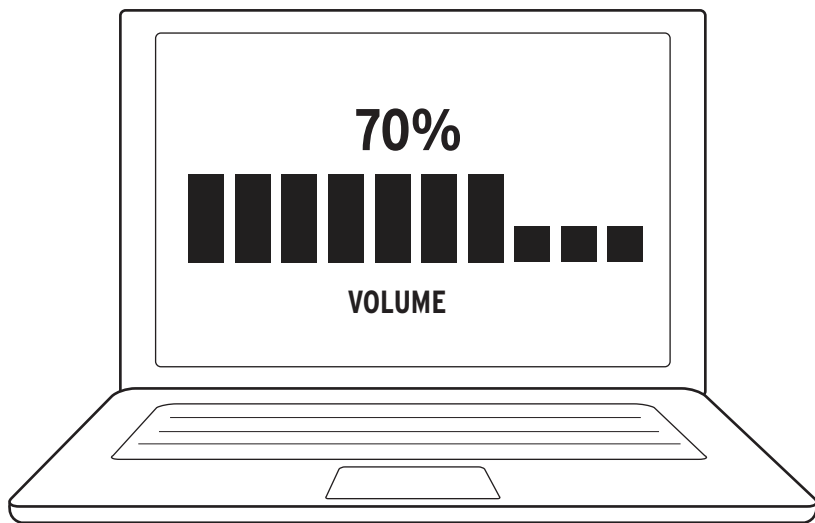
SPEAKER CONNECTION

RACCORDMENT DES ENCEINTES CONEXIÓN DE ALTAVOCES LAUTSPRECHERANSCHLUSSDIAGRAMM CONEXÃO DAS CAIXAS ACÚSTICAS COLLEGAMENTO DEGLI ALTOPARLANTI 扬声器连接图解



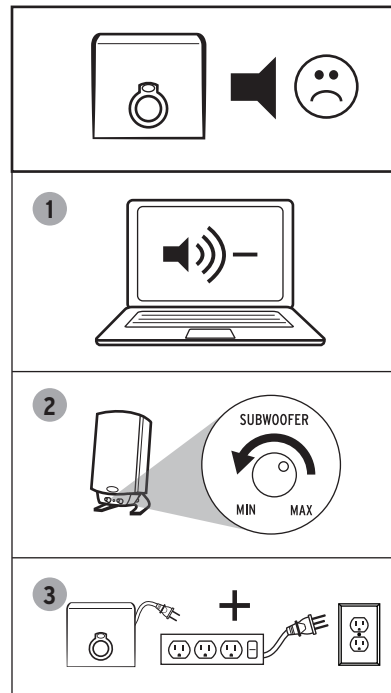
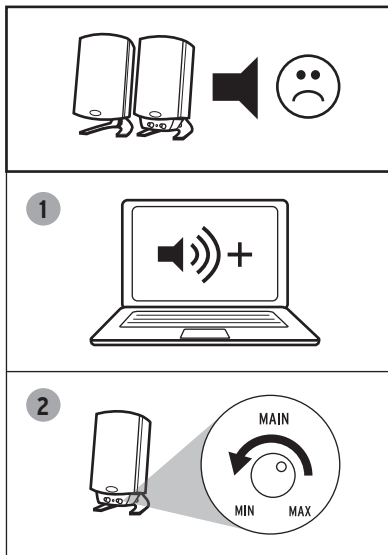
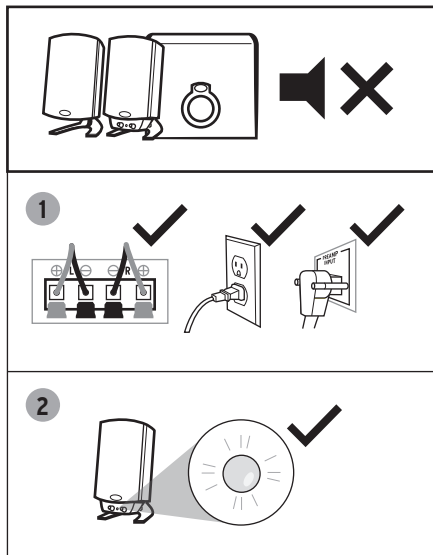
VOLUME

VOLUMEN 量



TROUBLESHOOTING

RÉSOLUTION DES PROBLÈMES SOLUCIÓN DE PROBLEMAS PROBLEMLÖSUNG SOLUÇÃO DE PROBLEMAS SOLUZIONE DEI PROBLEMI 故障排除





Klipsch[®]

KEEPERS OF THE SOUND[®]

3502 Woodview Trace, Indianapolis, IN, USA
KLIPSCH.COM